



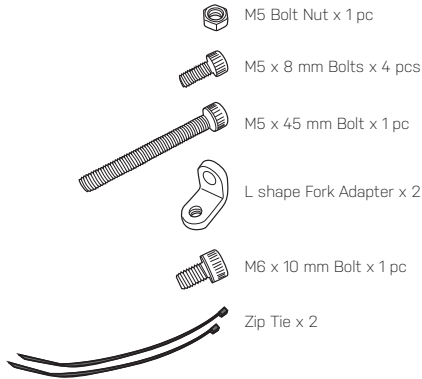
EN

FOR TREKKING BIKE ONLY

ROAD TIRE FITTING SIZE

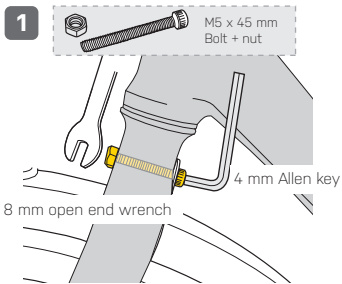
Up to 700 x 44C

\* Tools required: 3 & 4 mm Allen keys

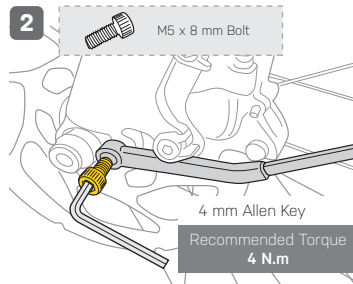


### INSTALLATION

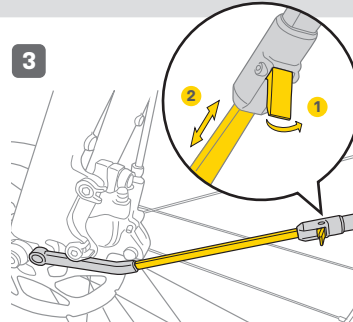
#### MOUNT ON BIKE with RIGID FORK



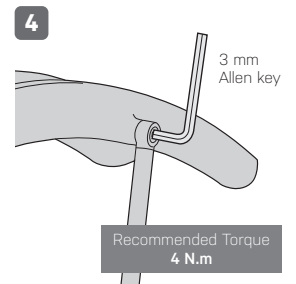
Hold the bolt nut and tighten the bolt at the same time.



Install the support legs on both sides.

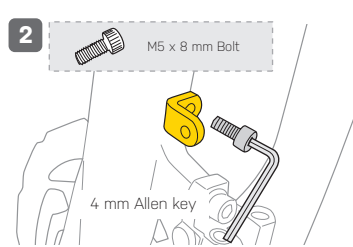
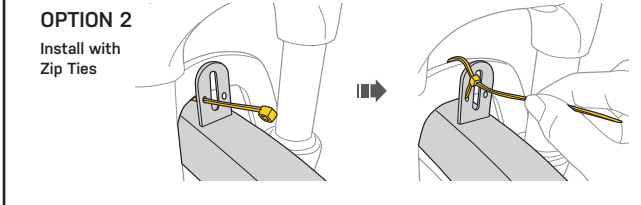
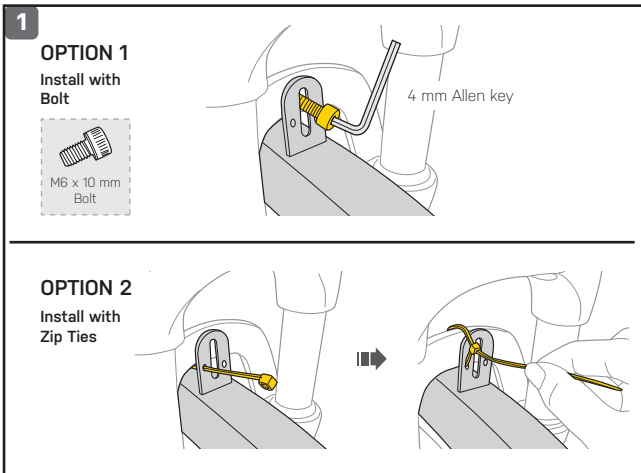


Lift the lever and adjust the support legs to proper length on both sides.

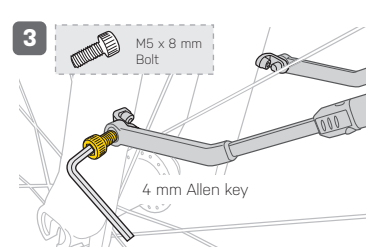


Tighten all bolts after installation is complete.

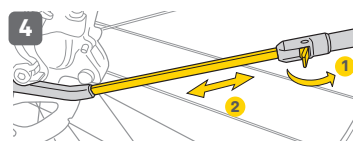
#### MOUNT ON BIKE with SUSPENSION FORK



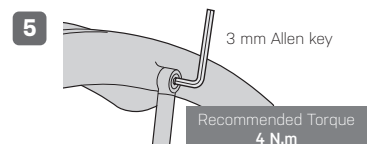
Install the L shape Fork Adapter as shown.



Install the support legs on both sides.



Lift the lever and adjust the support legs to proper length on both sides.



Tighten all bolts after installation is complete.

### WARNING

Make sure the fender is aligned with tire. Tighten all bolts after installation is complete.

Adjust DeFender™ for proper tire clearance. Improper angle or tire clearance may cause damage to DeFender™ or your bike and may cause bodily harm.

### RECOMMENDED

Recommend to adjust the DeFender™ as close to the tire for better dirt coverage.



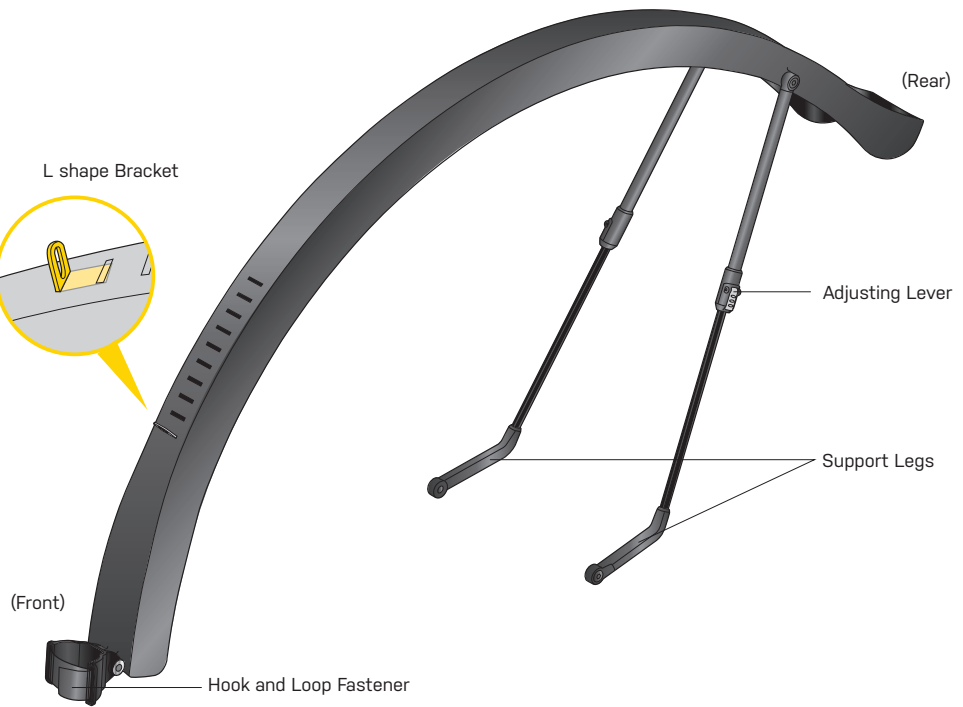
FOR TREKKING BIKE ONLY

ROAD TIRE FITTING SIZE

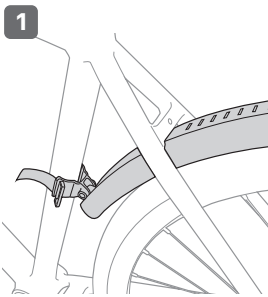
Up to 700 x 44C

\* Tool required: 3 & 4 mm Allen keys

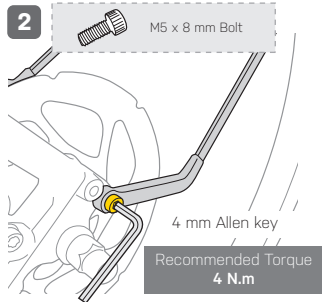
- M5 Bolt Nut x 1 pc
- M5 x 25 mm Bolt x 1 pc
- M5 x 8 mm Bolts x 2 pcs
- L shape Bracket x 1



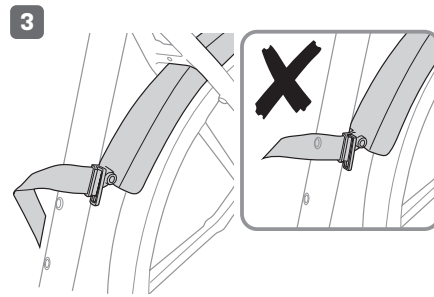
### INSTALLATION



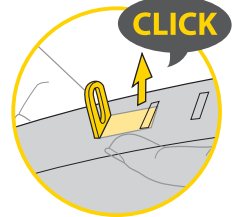
Pre-set the rear fender as shown.



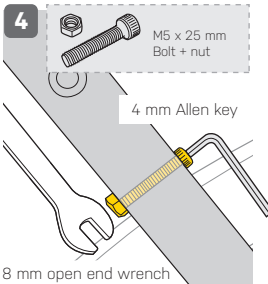
Install the support legs on both sides.



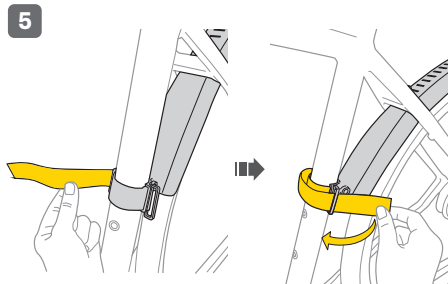
Ensure the hook and loop fastener will not interfere with water bottle holes.



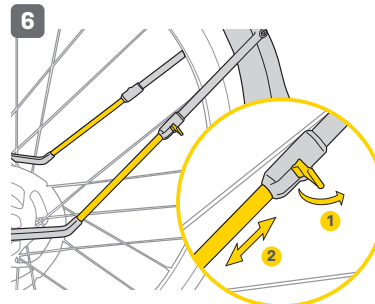
When the mounting position is confirmed, install the L shape Bracket in proper position.



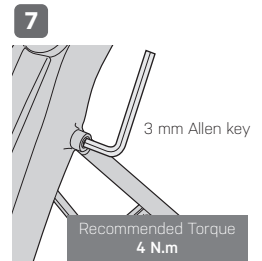
Hold the bolt nut and tighten the bolt at the same time.



Install the fender with Hook and Loop Fastener as shown.



Lift the lever and adjust the support legs to proper length on both sides.



Tighten all bolts after installation is complete.

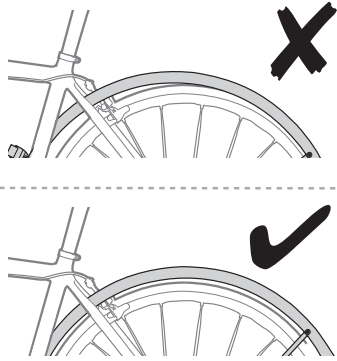
#### WARNING

Adjust DeFender™ TX for proper tire clearance. Improper angle or tire clearance may cause damage to DeFender™ TX or your bike and may cause bodily harm.

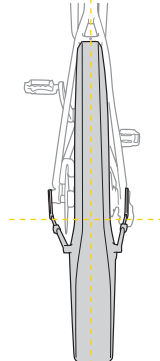
#### RECOMMENDED

Recommend to adjust the DeFender™ TX as close to the tire for better dirt coverage.

#### ANGLE ADJUSTMENT



#### WARNING



Make sure the fender is aligned with tire. Tighten all bolts after installation is complete.

Adjust DeFender™ for proper tire clearance. Improper angle or tire clearance may cause damage to DeFender™ or your bike and may cause bodily harm.

#### WARRANTY

2-year Warranty: All mechanical components against manufacturer defects only.

##### Warranty Claim Requirements

To obtain warranty service, you must have your original sales receipt. Items returned without a sales receipt will assume that the warranty begins on the date of manufacture. All warranties will be void if the product is damaged due to user crash, abuse, system alteration, modification, or used in any way not intended as described in this manual.

\* The specifications and design are subject to change without notice.

Please contact your Topeak dealer with any questions. For USA customer service, call: 1-800-250-3068 [www.topeak.com](http://www.topeak.com)